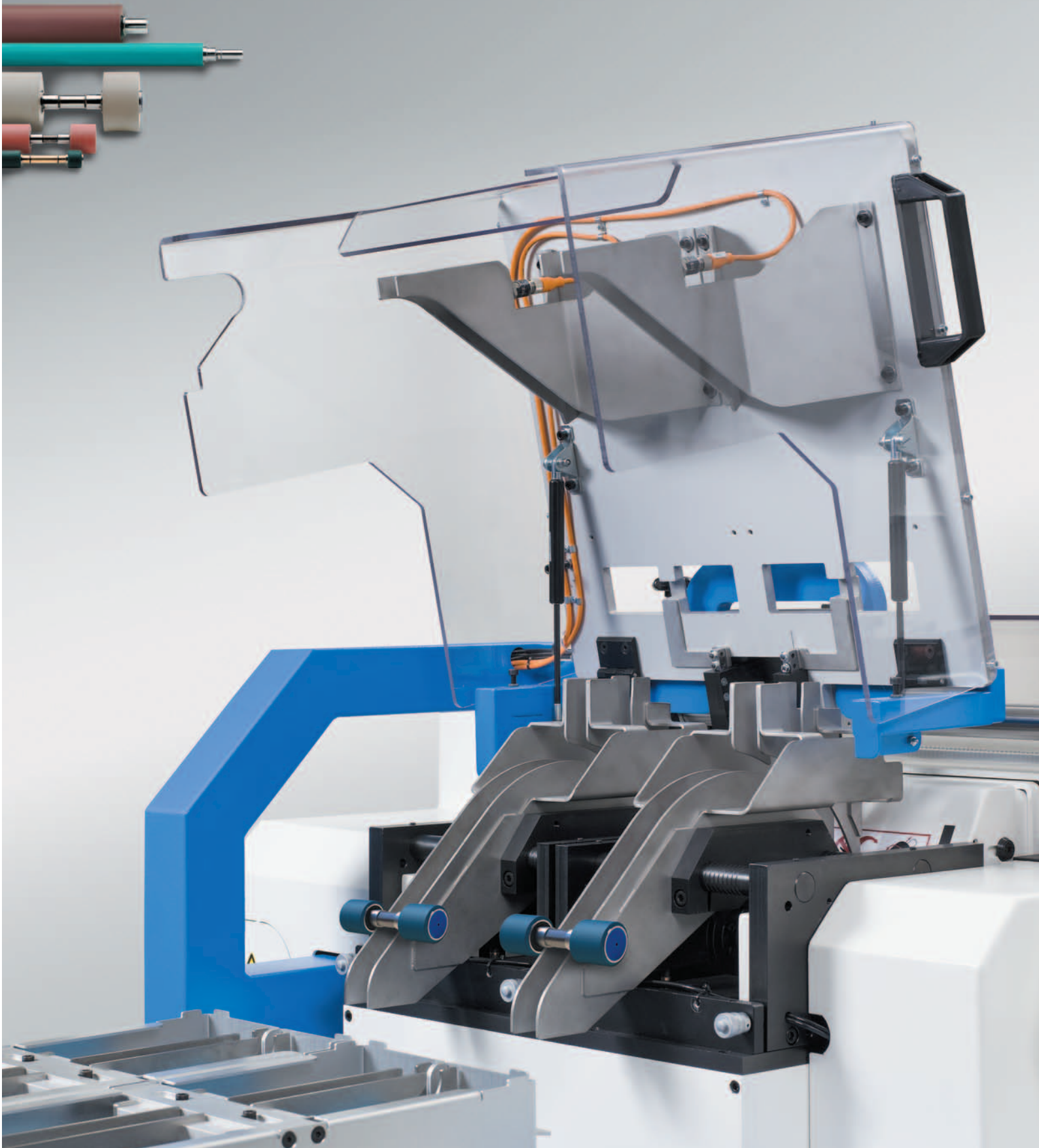


Rosink

service machines
for the cot maintenance workshop



SINGLE SOURCE TEXTILE FIELD SOLUTIONS





Comprehensive services for cot maintenance shop

200 YEARS EXPERIENCE IN DEVELOPMENT AND PRODUCTION



QUALITY GUARANTEED...



NEW!

SZ1 A TWIN FULLY-AUTOMATIC

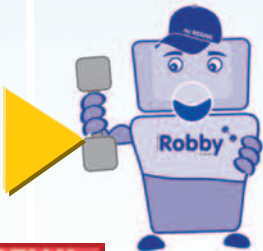
- more than 500 top rollers/hour
- less labour cost

Standard scope:

- polishing
- diameter measuring
 - SZ1 A TWIN
 - SZ1 A+HA COMBI
- holding attachments
- dust extractor



Robby with dust extractor



Patent Pending

Robby

by ROSINK

NEW!

- manual operation
- for ring and flyer
- Rosink quality
- incorporated dust extractor

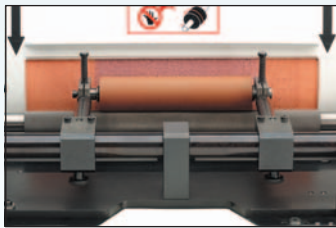
www.meetrobby.com



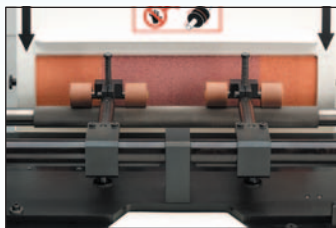


SZ1 HA SEMI-AUTOMATIC

- universal
- fully automatic grinding
- simple manual doffing
- high productivity with TWIN grinding



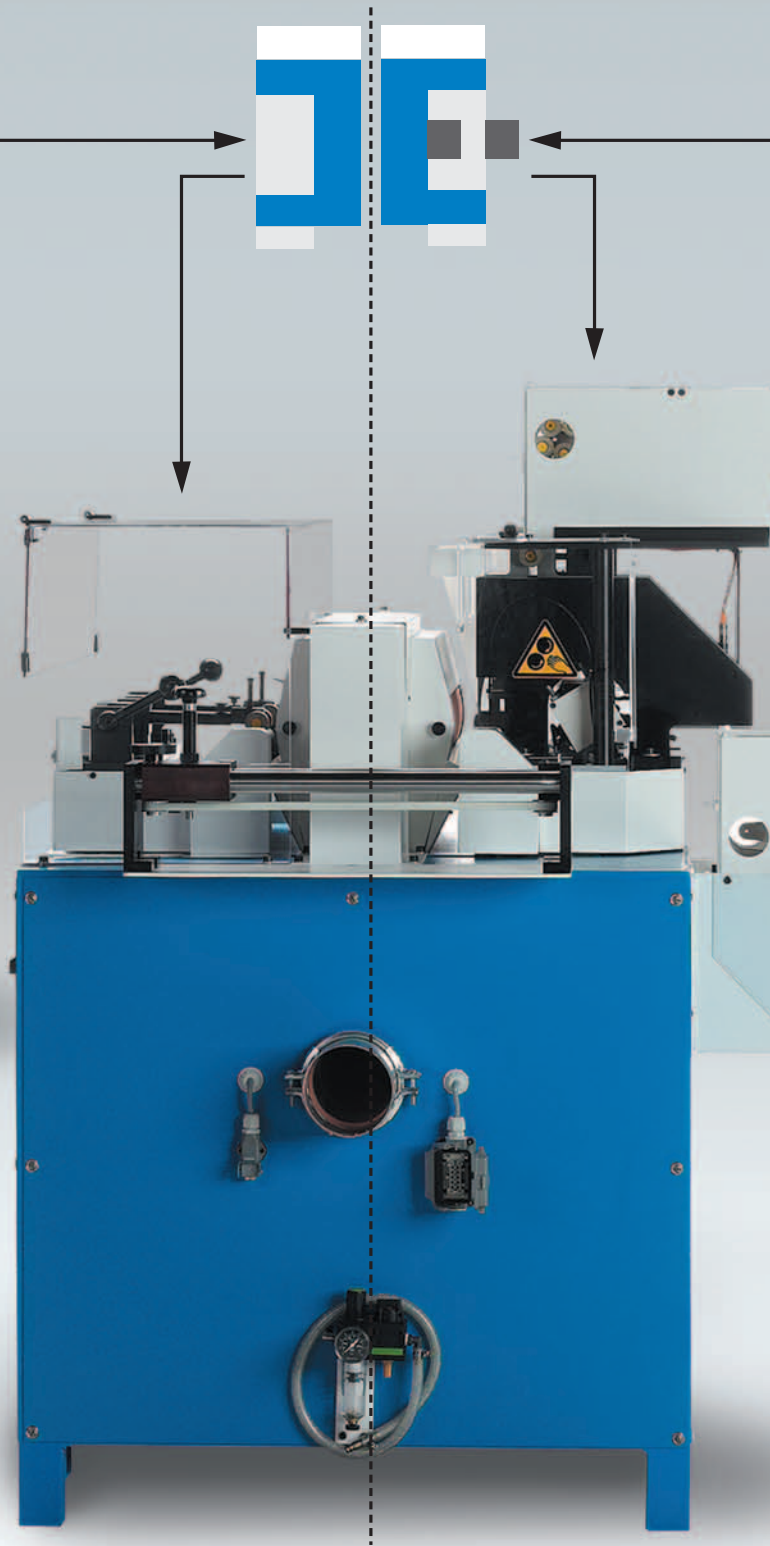
drawframe
and comber



ring and flyer
up to 400 cots/hour



for all types
of top rollers



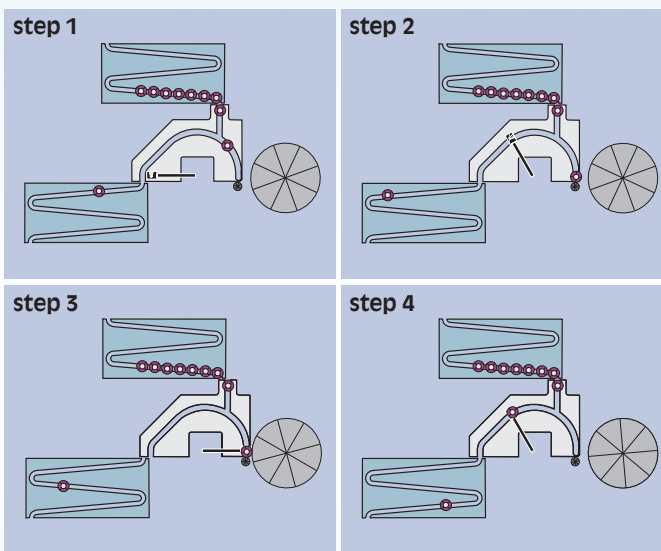
SZ1 A+HA COMBI

- two in one
- right side: fully automatic
- left side: semi automatic
- only available at Rosink



SZ1 A FULLY-AUTOMATIC

- more than 250 top rollers/hour
- less labour cost
- auto cot measuring
- diameter or amount grinding

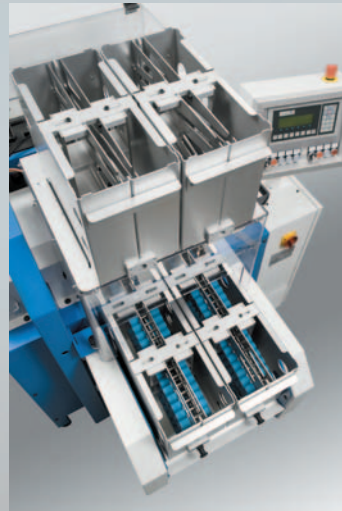


for many types of top rollers

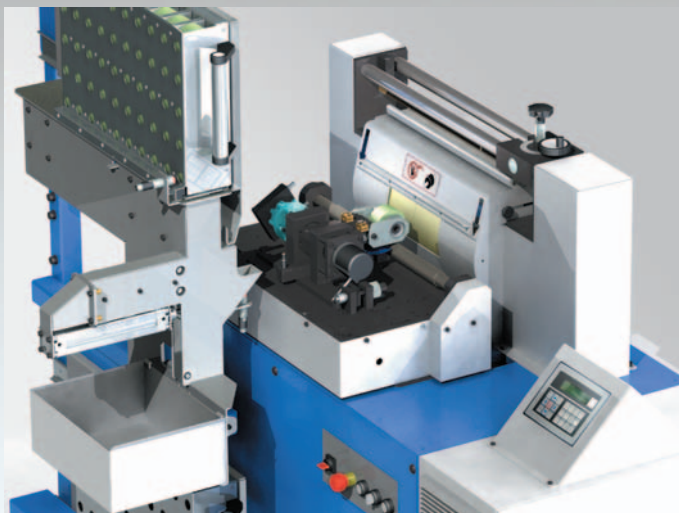
Various Magazines



▶ **Standard magazin**



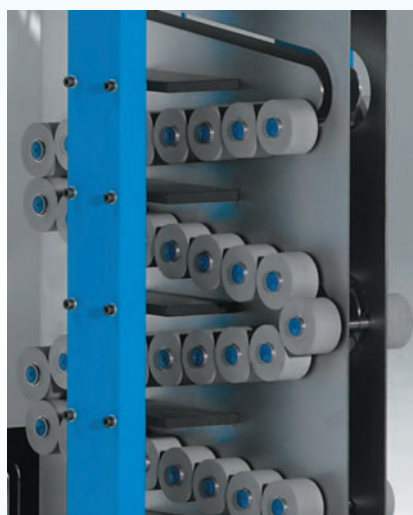
▶ **Double magazin**



▶ **Shaftless grinding**



▶ **Conveyor belt system RMM1**



Pressing und Measuring



▶ **Universal hydraulic press AZ11 H**



▶ **Hardness tester RHP**



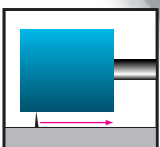
▶ **Pneumatic press AZ 71**



▶ **Measuring device WT 56**



▶ **Surface tester RST 2**



Rosink GmbH + Co. Maschinenfabrik

Bentheimer Str. 207
D-48529 Nordhorn
Germany
Phone +49(0)5921/7809-0
Fax +49(0)5921/7809-10
E-mail: sales@rosink.com
www.rosink.com